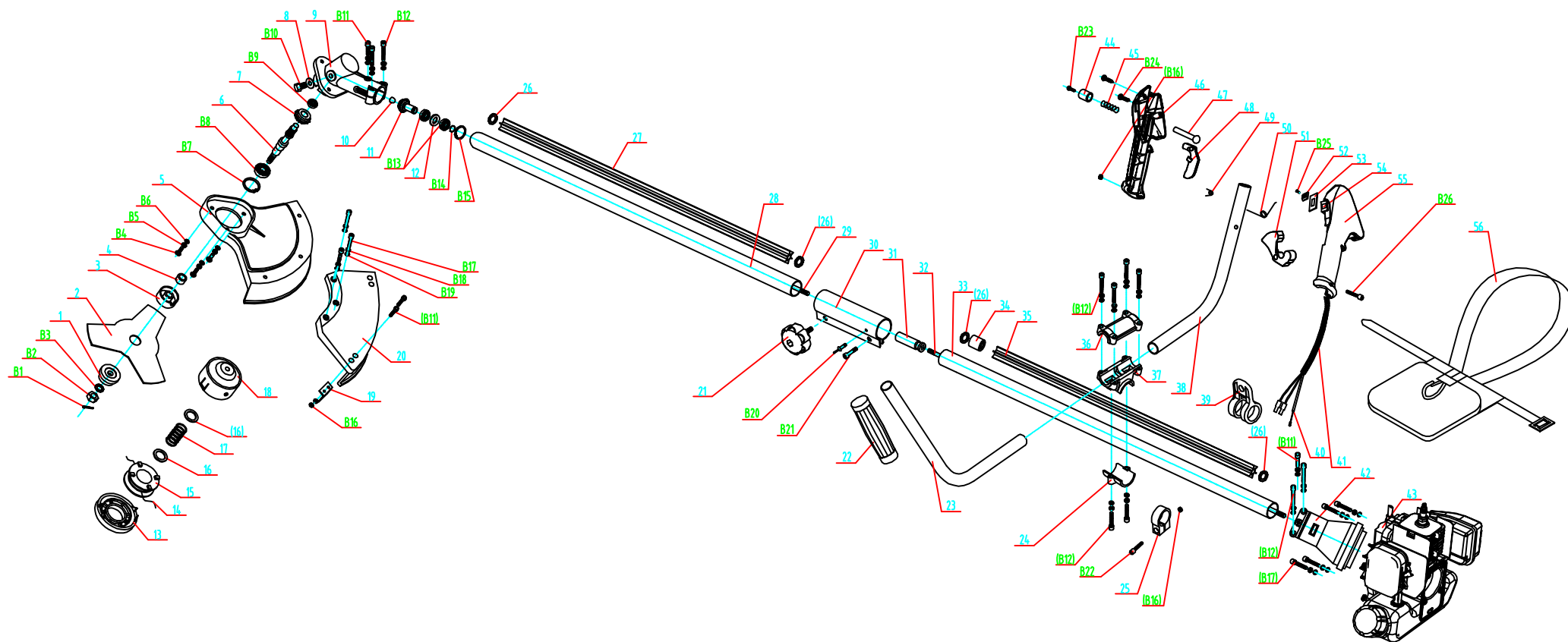


Pic. A

Marka:	Forester
Model:	(5918)



Pic. B

Marka:	Forester
Model:	(5918)

Part List A

Item No. Part Name

1	Screw
2	Fuel tank rack
3	Rubber sleeve
4	Starter assemble
4.1	Clasp
4.2	Handle
4.3	Start rope
4.4	Starter cover
4.5	Spring
4.6	Start wheel
4.7	Washer
4.8	Screw
5	Washer
6	Nut M8
7	Start reel
8	Crank case
9	Gasket
10	Oil seal
11	Bearing 6202
12	Crank
13	Key
14	Oil seal
15	Pin
16	Crank case
17	Screw
18	Gasket
19	Flywheel
20	Washer
21	Spring washer
22	Ignition winding

Item No. Part Name

23	Exinction
24	Screw
25	Clutch
26	Washer
27	Screw pin
28	Pin
29	Fly wheel cover
30	Screw
31	Screw
32	Fuel tank nog
33	Fuel tank assemble
33.1	Fuel tank
33.2	Cleaner
33.3	Fuel vitta
33.4	Vitta seat
33.5	Fuel vitta
33.6	Oil box cover assemble
33.6.1	Oil box cover
33.6.2	Oil box sheet gasket
33.6.3	Oil drain valve
33.6.4	Oil drain valve seat
33.6.5	Oil-box-cover flying rings
34	Baffle ring
35	Piston pin
36	Piston
37	Bearing K10x13x15
38	Piston ring
39	Cylinder gasket
40	Cylinder
41	Washer

Item No. Part Name

42	Bolt
43	Muffler assembly
44	Nut M6
45	Muffler cover
46	Cylinder cover
47	Rubber stopple
48	Top cover
49	Spark plug
50	Screw
51	Intake pipe
52	Intake gasket
53	Carburetor
54	Washer
55	Spring washer
56	Screw
57	Air filter assemble
57.1	Screw
57.2	Choker handle
57.3	Air filter
57.4	Choker
57.5	Filter cover foam
57.6	Inside cover
57.7	Outside cover
58	Baffler
59	Screw

Marka:	Forester
Model:	(5918)

Part List B

Item No. Part Name

- 1 Lower plate
- 2 Blade
- 3 Upper plate
- 4 Bush
- 5 Guard shield of blade
- 6 Driven shaft
- 7 Driven gear
- 8 Airproof gasket
- 9 Gear case
- 10 Jam
- 11 Initiative gear shaft
- 12 Bearing washer
- 13 Rope wheel covering
- 14 Nylon rope
- 15 Rope seat
- 16 Gasket
- 17 Pull-out piece spring A
- 18 Box of rope
- 19 Knife
- 20 Plastic guard shield
- 21 Knob
- 22 Pastern sheath
- 23 Steel tube A
- 24 Lower plate
- 25 Orientating ring
- 26 Baffle ring
- 27 Plastic tube A
- 28 Aluminum tube A
- 29 Flexible shaft A
- 30 Connector

Item No. Part Name

- 31 Hookup set of the shaft
- 32 Flexible shaft B
- 33 Aluminum tube B
- 34 Copper bush B
- 35 Plastic tube B
- 36 Upper plate
- 37 Orientating block
- 38 Steel tube B
- 39 Ring
- 40 Throttle line
- 41 Plastic tube
- 42 Join set subassembly
- 43 Engine
- 44 Button
- 45 Pull-out piece spring B
- 46 Handle A
- 47 Pin
- 48 Insurance of the trigger
- 49 Torsion-bar spring A
- 50 Torsion-bar spring B
- 51 Throttle line
- 52 Switch
- 53 Aluminum scutcheon
- 54 Switch assembly
- 55 Handle B
- 56 Shoulder strap

Item No. Part Name

- B1 Pin
- B2 Screw
- B3 Washer
- B4 Screw
- B5 Spring washer
- B6 Gasket
- B7 Baffle ring
- B8 Bearing 6201
- B9 Bearing 629
- B10 Bolt
- B11 Screw
- B12 Screw
- B13 Bearing 6900-Z
- B14 Baffle ring
- B15 Baffle ring
- B16 Nut
- B17 Screw
- B18 Spring washer
- B19 Washer
- B20 Rivet
- B21 Screw
- B22 Screw
- B23 Screw
- B24 Screw
- B25 Screw
- B26 Screw

Marka:	Forester
Model:	(5918)